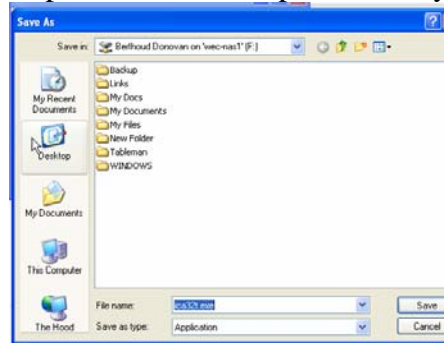
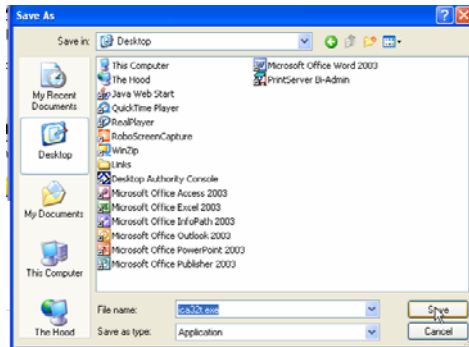


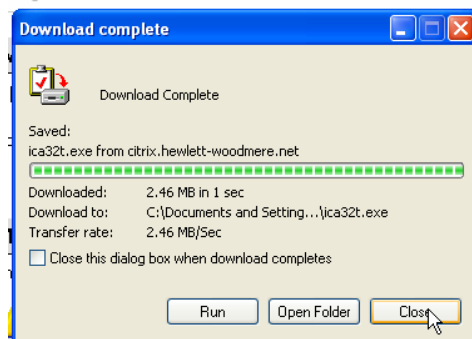
4. You will be asked if you want to run or save the file, choose to save and then the save as screen comes up. Click on desktop to save to your desktop.



5. Then click on the save button.



6. You might see the following screen after the download completes, if you do click close, then close the Internet Explorer screen. If you don't see this screen you will be back at the Internet Explorer screen if you are, then close the Internet Explorer screen.



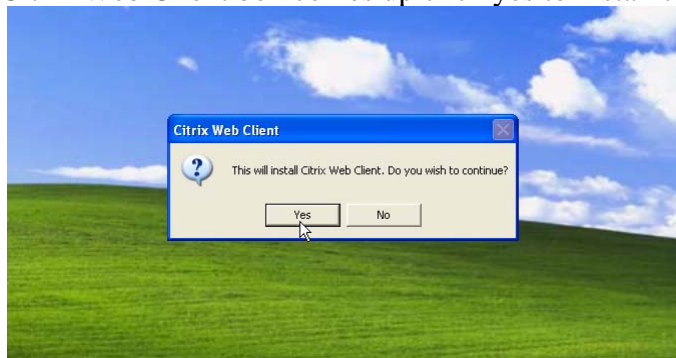
7. Now find the file ica32t.exe on your desktop and double click on it.



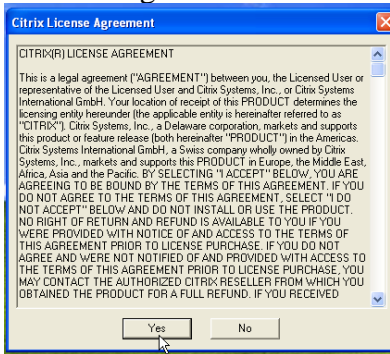
8. You might receive the following warning box after you double click the ica32t.exe file, if you do click Run. If you don't proceed to step 9.



9. When the Citrix Web Client box comes up click yes to install the client.



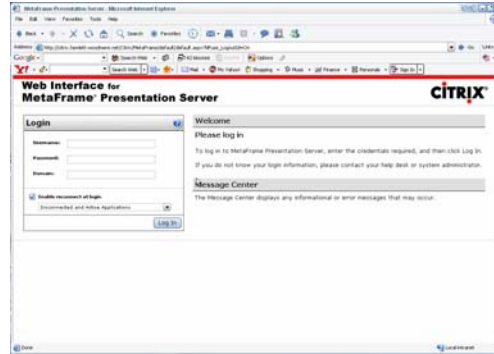
10. Click Yes to accept the license agreement.



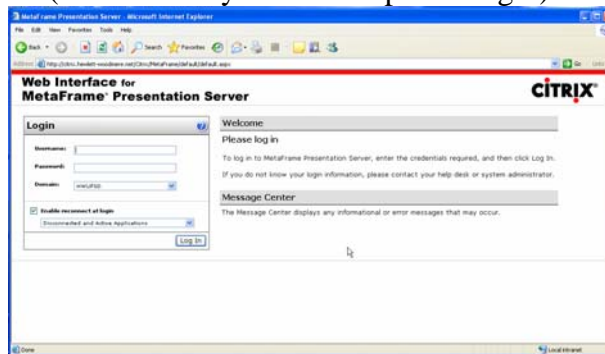
11. Click OK on the setup completed successfully. Also notice the warning that you may need to restart your web browser to activate changes. If you have any Internet Explorer windows open close them before going any further.



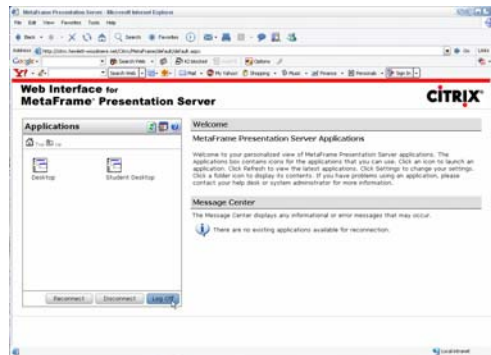
12. Now Launch Internet Explorer again and in the address box type in citrix.hewlett-woodmere.net and you will notice under the message center there is no selection for the Citrix client.



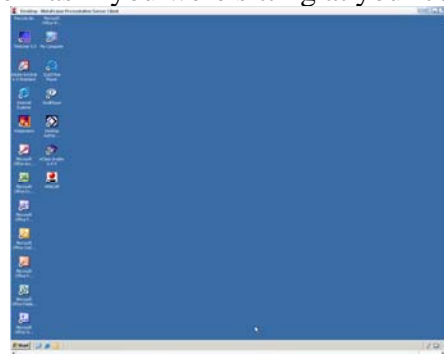
13. Now enter your username and password as you would at school. Under Domain enter HWUFS (If it is already entered skip entering it) and click on Log in.



14. You will now be presented with the applications screen you will see one or two desktop choices. Choose either one Desktop or Student Desktop and click on that choice.



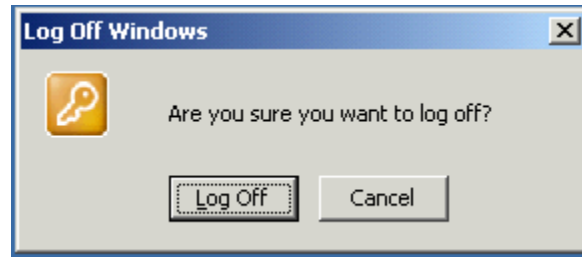
15. If you have done everything correctly you will be logged onto the system and the Hewlett-Woodmere school desktop will load inside Internet Explorer. You can now access the system as if you were sitting at your computer in school.



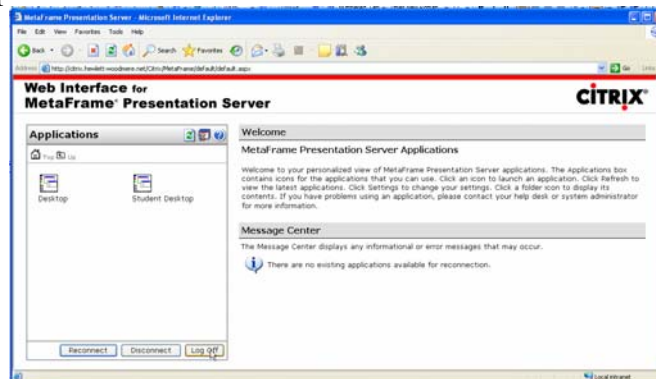
16. When you are done using the Hewlett-Woodmere network please click on Start and Log-Off.



17. Then click OK to LOG OFF.



18. If you have been logged on to the system for less than 5 minutes you will be returned to the Applications selection screen. Click on Log Off or close the Internet Explorer window. If you are returned to the login screen you can close internet explorer.



19. The next time you want to access the server just open Internet Explorer and go through the logon process and you will be connected to the network. **DON'T FORGET WHEN YOU ARE DONE ON THE NETWORK TO ALWAYS LOG OFF.**